

UPGRADE is the European Journal for the Informatics Professional, published bimonthly at <http://www.upgrade-cepis.org/>

UPGRADE is the anchor point for UPENET (UPGRADE European Network), the network of CEPIs member societies' publications, that currently includes the following ones:

- **Mondo Digitale**, digital journal from the Italian CEPIs society AICA
- **Novática**, journal from the Spanish CEPIs society ATI
- **OCG Journal**, journal from the Austrian CEPIs society OCG
- **Pliroforiki**, journal from the Cyprus CEPIs society CCS
- **Pro Dialog**, journal from the Polish CEPIs society PTI-PIPS

Publisher

UPGRADE is published on behalf of CEPIs (Council of European Professional Informatics Societies, <http://www.cepis.org/>) by **Novática** (<http://www.ati.es/novatica/>), journal of the Spanish CEPIs society ATI (*Asociación de Técnicos de Informática*, <http://www.ati.es/>)

UPGRADE monographs are also published in Spanish (full version printed; summary, abstracts and some articles online) by **Novática**, and in Italian (summary, abstracts and some articles online) by the Italian CEPIs society ALSI (*Associazione nazionale Laureati in Scienze dell'Informazione e Informatica*, <http://www.alsi.it/>) and the Italian IT portal *Tecnoteca* (<http://www.tecnoteca.it/>)

UPGRADE was created in October 2000 by CEPIs and was first published by **Novática** and **INFORMATIK/INFORMATIQUE**, bimonthly journal of SVI/FSI (Swiss Federation of Professional Informatics Societies, <http://www.svifsi.ch/>)

Editorial Team

Chief Editor: Rafael Fernández Calvo, Spain, rfcvalvo@ati.es

Associate Editors:

François Louis Nicolet, Switzerland, nicolet@acm.org

Roberto Carniel, Italy, carniel@dgt.uniud.it

Zakaria Maamar, Arab Emirates, Zakaria.Maamar@zu.ac.ae

Soraya Kouadri Mostéfaoui, Switzerland, soraya.kouadrimostefaoui@unifr.ch

Editorial Board

Prof. Wolfried Stucky, Former President of CEPIs

Prof. Nello Scarabottolo, CEPIs Vice President

Fernando Piera Gómez and

Rafael Fernández Calvo, ATI (Spain)

François Louis Nicolet, SI (Switzerland)

Roberto Carniel, ALSI – Tecnoteca (Italy)

UPENET Advisory Board

Franco Filippazzi (Mondo Digitale, Italy)

Rafael Fernández Calvo (Novática, Spain)

Veith Risak (OCG Journal, Austria)

Panicos Masouras (Pliroforiki, Cyprus)

Andrzej Marciniak (Pro Dialog, Poland)

English Editors: Mike Andersson, Richard Butchart, David Cash, Arthur Cook, Tracey Darch, Laura Davies, Nick Dunn, Rodney Fennemore, Hilary Green, Roger Harris, Michael Hird, Jim Holder, Alasdair MacLeod, Pat Moody, Adam David Moss, Phil Parkin, Brian Robson

Cover page designed by Antonio Crespo Foix, © ATI 2005

Layout Design: François Louis Nicolet

Composition: Jorge Llácer-Gil de Ramales

Editorial correspondence: Rafael Fernández Calvo rfcvalvo@ati.es

Advertising correspondence: novatica@ati.es

UPGRADE Newsletter available at

<http://www.upgrade-cepis.org/pages/editinfo.html#newsletter>

Copyright

© Novática 2005 (for the monograph and the cover page)

© CEPIs 2005 (for the sections MOSAIC and UPENET)

All rights reserved. Abstracting is permitted with credit to the source. For copying, reprint, or republication permission, contact the Editorial Team

The opinions expressed by the authors are their exclusive responsibility

ISSN 1684-5285

Monograph of next issue (February 2006):

Key Success Factors in Software Engineering
 (The full schedule of UPGRADE is available at our website)

Monograph: The Semantic Web (published jointly with Novática*)

Guest Editors: *Luis Sánchez-Fernández, Michael Sintek, and Stefan Decker*

- 2 Presentation. The Semantic Web or The Next Web Wave – *Luis Sánchez-Fernández, Michael Sintek, and Stefan Decker*
- 5 The Semantic Web: Fundamentals and A Brief State-of-the-Art – *Luis Sánchez-Fernández and Norberto Fernández-García*
- 12 Leveraging Metadata Creation by Annotation for The Semantic Web – *Siegfried Handschuh*
- 19 The Quest for Information Retrieval on The Semantic Web – *David Vallet-Weadon, Miriam Fernández-Sánchez, and Pablo Castells-Azpilicuet*
- 24 Functional RuleML: From Horn Logic with Equality to Lambda Calculus – *Harold Boley*
- 30 Towards Semantic Desktop Wikis – *Malte Kiesel and Leo Sauerermann*
- 35 Towards Semantically-Interlinked Online Communities – *Uldis Bojars, John G. Breslin, Andreas Harth, and Stefan Decker*
- 41 A Semantic Search Engine for the International Relation Sector – *Luis Rodrigo-Aguado, V. Richard Benjamins, Jesús Contreras-Cino, Diego-Javier Patón-Villahermosa, David Navarro-Arno, Robert Salla-Figuerol, Mercedes Blázquez-Cívico, Pilar Tena-García, and Isabel Martos-Laborde*
- 48 Semantic Search in Digital Image Archives: A Case Study – *Julio Villena-Román, José-Carlos González-Cristóbal, Cristina Moreno-García, and José- Luis Martínez-Fernández.*
- 55 Configuring e-Government Services Using Ontologies – *Dimitris Apostolou, Ljiljana Stojanovic, Tomás Pariente-Lobo, Joan Battle-Montserrat, and Andreas E. Papadakis*

UPENET (UPGRADE European Network)

- 63 From **Novática** (ATI, Spain)
 ICT for Education
 An Initiative for Educational Modernization: The Ponte dos Brozos Project – *Simón Neira-Dueñas and Felipe Gómez-Pallete Rivas*
- 71 From **Pro Dialog** (PIPS, Poland)
 ICT for Education
 On The Superiority of Internet-Based Mass Enrolment to High Schools over Traditional – *Andrzej P. Urbanski*

* This monograph will be also published in Spanish (full version printed; summary, abstracts, and some articles online) by **Novática**, journal of the Spanish CEPIs society ATI (*Asociación de Técnicos de Informática*) at <http://www.ati.es/novatica/>, and in Italian (online edition only, containing summary, abstracts, and some articles) by the Italian CEPIs society ALSI (*Associazione nazionale Laureati in Scienze dell'Informazione e Informatica*) and the Italian IT portal *Tecnoteca* at <http://www.tecnoteca.it/>.

Configuring e-Government Services Using Ontologies

Dimitris Apostolou, Ljiljana Stojanovic, Tomás Pariente-Lobo, Joan Batlle-Montserrat, and Andreas E. Papadakis

The increasing complexity of e-Government services demands a correspondingly larger effort for management. Today, many system management tasks, such as service verification and re-configuration due to changes in the law, are often performed manually. This can be time-consuming and error-prone. The main objective of the OntoGov (IST-2002-507237) project, <<http://www.ontogov.com/>>, is to overcome the above mentioned problems by developing a semantically-enriched platform that will facilitate the consistent configuration and re-configuration of e-Government services. This paper outlines the overall OntoGov platform and demonstrates how the Service Modeller can be used to consistently model e-Government Services.

Keywords: e-Government Services, Ontologies, Semantic Technologies.

1 Introduction

In order to fully realise the e-Government potential for productivity growth [6], it is not sufficient to modernise the front office by offering public services over the Internet through e-Government portals. Problems arise from the wide gap and inconsistencies that exist between the perspective of policy-makers and public administration managers on the one hand and the technical realization of e-Government on the other hand. For instance, a change in policy or legislation that affects a particular Public Administration (PA) business process does not propagate seamlessly into the corresponding e-Government service provided via the portal.

Furthermore, problems arise from the loss of critical knowledge about the service configuration. Hence, for e-Government initiatives to succeed, in addition to modernising the front office by offering public services via Internet portals, attention should be also paid to streamlining, re-organising and supporting the back-office processes of public administrations that provide services to citizens. Furthermore, actions should be taken to limit the loss of critical knowledge assets during the life cycle of e-Government services.

The main objective of the OntoGov (IST-2002-507237) project, <<http://www.ontogov.com/>>, is to develop a semantically-enriched platform that will facilitate the consistent configuration and re-configuration of e-Government services. This paper outlines the overall OntoGov platform and demonstrates how the Service Modeller, an intermediary project result, can be used to consistently configure an e-Government Service.

The remainder of this paper is organised as follows: In Section 2, state of the art and related projects are reviewed. In Section 3, the project's software platform is outlined. In Section 4, an overview of the service modelling approach is presented while in Section 5, service configuration is illustrated using a real-life scenario. Finally, the benefits of our approach are outlined in Section 6.

Dimitris Apostolou is Manager in the Research and Innovation Unit of Planet's International Activities Group. He holds a PhD in Electrical and Computer Engineering from the National Technical University of Athens, Greece, and an MSc in Information Technology from UCL, United Kingdom. He has more than ten years experience in research & development projects. He has participated in and managed more than ten research and development projects. Currently he is project manager of the OntoGov IST project. He has published more than 30 papers in international journals and conferences in the areas of e-government, knowledge management, and e-learning. <dapost@planet.gr>

Ljiljana Stojanovic is Research Scientist in the WIM department of the FZI at the University of Karlsruhe, Germany. She received an MSc degree in computer science from the Faculty of Electronic Engineering, University of Nis, Serbia and Montenegro, and a PhD degree from the University of Karlsruhe for a thesis on "Methods and Tools for Ontology Evolution". She has participated in several R&D programs funded by the European Commission's IST Programme related to e-learning, e-government and knowledge management. Currently she is a technical and scientific manager of the OntoGov project (IST). She has published more than 30 papers in international journals and conferences in the areas of ontology engineering and e-government. <Ljiljana.Stojanovic@fzi.de>

Tomás Pariente-Lobo was awarded the degree of Bachelor in Electrical Engineering in 1985 by the *Universidad Politécnica de Madrid* (UPM), Spain. 1987 he started working for the company Indra España, where has taken part in several projects. Expert in e-Government, knowledge management and ontologies, he has worked for the IST projects funded by European Commission SmartGov and OntoGov, in which he is working as Functional Analyst. He has had several papers published in international journals and at conferences. <tpariente@indra.es>

Joan Batlle-Montserrat has a Degree in Physical Sciences from the *Universitat de Barcelona*, Spain; he got a Postgrade in Computing Consulting from *Institiut Català de Tecnologia* and a Masters degree in Management of Information Technologies from *Universitat Ramon Llull*, Barcelona, and

2 State of The Art and Related Projects

State of the Art in e-Government includes realising the concept of one-stop e-Government [4], especially together with the idea of service portals with life-situation navigation [9]. The basic ideas of one-stop e-Government are already well-developed as well as their technical realisation on state-of-the-art Web Service technology. What is not adequately solved are the methodological and technological prerequisites as well as the back-office processes, which help turning one-shot investments into one-stop approaches into sustainable, long-term endeavours which can be maintained effectively and consistently over a long period of time. This idea requires on the one hand a higher level of re-configurability and on-the-fly changes of services – which are not provided by today’s web service technology - and on the other hand a well-understood and technically supported knowledge logistics along the horizontal dimension (many implementing sites) and vertical dimension (several levels of decision-making).

To deal on the one hand with re-configurability and changes of e-Government services and on the other hand with knowledge-enhanced back-office processes for configuring eGov services, we need tools based on robust conceptual models. In OntoGov, we are using Semantic Web technologies for constructing ontologies, which represent the meaning of processed data and resources and the functionality of e-Government services. Ontologies have been employed by other projects in the e-Government domain, each with a primary objective: The e-POWER project [11] has employed knowledge modelling techniques for consistency checks, harmonisation or consistency enforcement in legislation, etc. The SmartGov project [1] developed a knowledge-based platform for assisting public sector employees to generate online transaction services by simplifying their integration with already installed Information Technology systems. Similarly, the ICTE-PAN project [7] developed a methodology for modelling PA operations, and tools to transform these models into design specifications for an e-Government system. Further, there are a number of

(cont. from previous page)

attended other specialized courses. He is Head of International Projects Office in the Municipal Institute of Informatics (IMI) in the City of Barcelona, <<http://www.bcn.es>>; from 2000 to 2004 he was the Technical Coordinator of Internet in IMI, where, from 1997 to 2000, he was the Head of the Communications Area holding responsibilities over the communications of the computing systems of the corporation as well as the corporate data network and local networks. From 1991 to 1997 he worked as Chief of the Distributed Systems department of IMI. From 1989 to 1991, he was Chief of Application Development for Distributed Systems and Networks. <jbattle@mail.bcn.es>

Andreas E. Papadakis received his Engineering Diploma from the Dept. of Electrical and Computer Engineering of the National Technical University of Athens (NTUA) in 1997. He has been awarded a PhD from the same NTUA department in 2002, with his theme “*Unified Service Provision and Control Architecture in the PSTN and the Internet*”. Meanwhile (1998-2002), he was a Research Associate in the Telecommunications Laboratory of the NTUA, being involved in the analysis, design and deployment of telecommunication services over distributed, intelligent networks (projects IST STARLITE and ACTS MARINE). He currently works in Archetypon S.A. as a project manager of European research (IST ONTOGOV, IST ENAMORADO) and national commercial projects. His research interests include Internet technologies (XML, Web Services), Semantic Web (RDF, Ontologies) and multimedia content provision (MPEG 7 & 21). He is a member of the Technical Chamber of Greece. <apapadak@archetypon.com>

ongoing projects e.g. Terregov [3], Qualeg [10], that make use of semantic technologies for achieving semantic interoperability and integration between e-Government systems.

3 OntoGov Platform Overview

In principal, the lifecycle of an e-Government service starts when PA Managers initiate the generation or the change of a service. In order to accomplish this task, PA Managers need to have a high-level view of the service

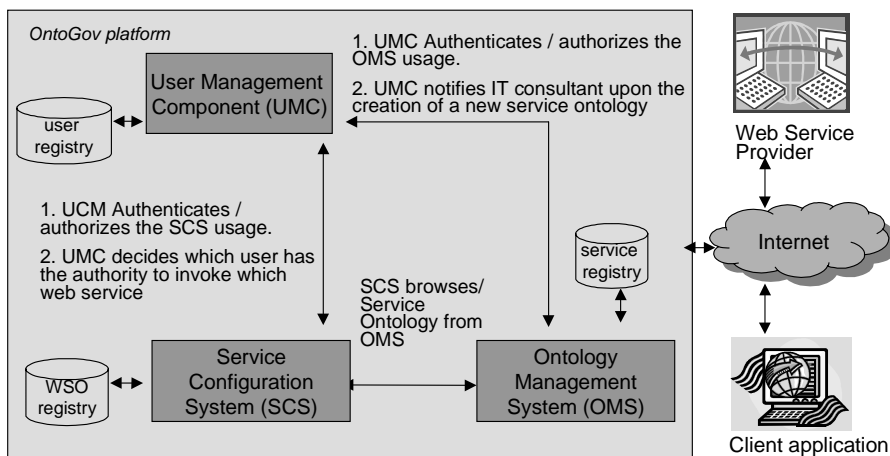


Figure 1: A Bird's Eye View of The OntoGov Platform.

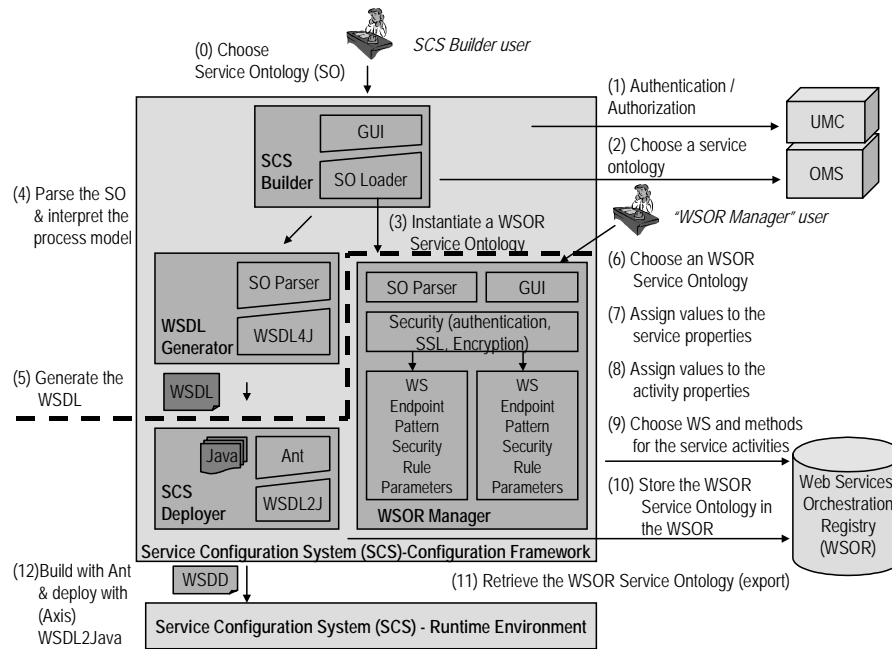


Figure 2: Functional Architecture of The Service Configuration Framework – Configuration Framework.

model, links to related laws, resources involved and inter-relations with other services. Such a high-level view is provided by the service models developed through OntoGov's Ontology Management System (see Figure 1).

The **Ontology Management System (OMS)** is used for creating, modifying, querying, and storing ontology-based descriptions of e-Government services. It focuses on service lifecycle management, which includes service modelling, service reuse, service discovery, service composition as well as service reconfiguration. The OMS comprises: (i) The **Service Modeller**, an editor for the semantic description of e-Government services. It has a graphical user interface that enables domain experts to create and maintain service ontologies. (ii) The **KAON2 OIModeller**, a graphical tool for general-purpose ontology creation and maintenance. (iii) The **Service Registry** that enables the registration and searching for ontologies. (iv) The **Service API** that provides capabilities for the automatic identification of problems (i.e. inconsistencies) in the description of the e-Government services that can arise during the modelling or changes in relevant data (e.g. in the law). When such problems arise, it assists the domain experts in identifying the sources of the problem, in analysing and defining solutions for resolving them. Finally, it helps in determining the ways for applying the proposed solutions.

The role of the **Service Configuration System (SCS)** is to bridge the gap between the service definition provided by the OMS, and the generation, deployment and execution of the e-Government service. Configuration, generation and deployment of the e-Government service is handled by the SCS Configuration Framework (Figure 2), while execution of services is handled by the SCS Runtime Framework (Figure 3).

The result of the OMS is a set of ontologies that defines among other things the service model and the domain information needed to provide a service. The service model is defined through the process ontology and becomes the main source of information for the Configuration Framework. This information is transformed to a machine-readable service description allowing its execution on a server. This task is performed through the **SCS Builder** component.

The **Web Service Orchestration Registry (WSOR)** is an ontology-based repository where the mapping among activities of the service model and their implementation (Web Services) is performed.

The SCS Runtime Framework, allows the execution of the service. Within the SCS Runtime Framework the end point derives the request to the **Process Engine** component which is a workflow tool which is in charge of querying the Service Ontology (process model information) and selecting the first activity described in the process model. The Process Engine transfers control to the **WS Manager**. The WS Manager looks up in the WSOR ontology the implementation which, according to the data provided by the consumer or derived from the process, should be invoked to accomplish the activity selected. The **Synchronization Manager** hides the complexity of dealing with synchronous/asynchronous calls. Execution and monitoring (logging) of the service is done by the **SCS Audit and Tracking component**.

The acceptance of the OntoGov approach poses strict security and management requirements. In order to use the OntoGov functionality the PAs are expected to expose some of their resources and to allow access to their procedures in an IT environment. Such an open and flexible approach can

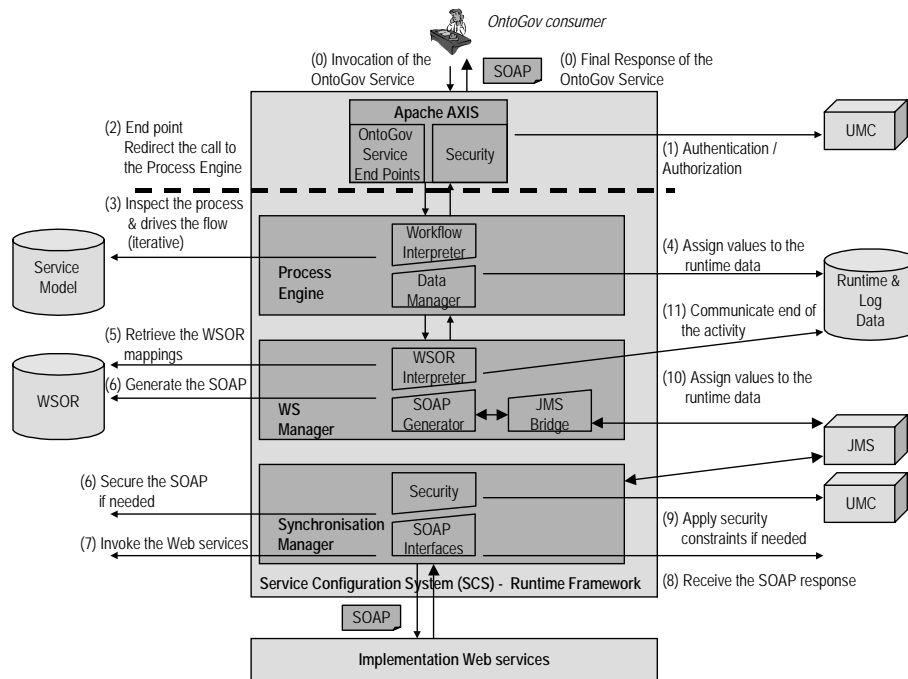


Figure 3: Functional Architecture of the Service Configuration Framework – Runtime Framework.

only be built on a reliable platform of trusted relationships. The **User Management Component (UMC)** supports the areas of User and Group management, Authentication, Access control and Messaging – extending over the security considerations. It is an auxiliary component of the platform, supporting a personalized working environment, the co-existence of the components and the shielding of sensitive resources.

4 Service Modelling in OntoGov

Based on the analysis of the existing standard for Semantic Web Services (i.e. OWL-S, Ontology Web Language-Semantics, and WSMO, Web Service Modeling Ontology) and by taking into account the e-Government specific requirements [8], we have defined a **meta-ontology cluster** which contains general ontologies that may be used for describing e-Government services and do not change from one deployment to another. It consists of the following ontologies:

- 1) The **Legal Ontology** defines the structure of the legal documents, which includes paragraphs, sections, amendments, etc.;
- 2) the **Organisational Ontology** models an organisation by defining its organisational units, roles, persons, resources etc.
- 3) the **Lifecycle Ontology** comprising instances of all (design) decisions relevant for the new service (e.g. technical or process reasons), including instances of the legal and organizational ontologies;
- 4) the **Domain Ontology** contains domain specific knowledge;
- 5) the **Service Ontology** describes the elements for modelling the service flow. It includes the *Domain Ontol-*

ogy for defining inputs and outputs as well as the *Lifecycle Ontology* for explaining reasons that motivate the decisions;

6) the **LifeEvent Ontology** models the categorization of the e-Government services;

7) the **Profile Ontology** contains metadata about e-Government services and includes all 7 previously mentioned ontologies.

The *Profile Ontology* and the *Service Ontology* are defined based on the corresponding OWL-S ontologies by taking into account the e-Government specificities such as a reference to the law that is modelled through the *Legal Ontology*. The *Domain Ontology* defines the "terminology" used in the e-Government domain (e.g. type of documents such as passport). The *Organisation Ontology* is defined to take into account experiences from the business process modelling and re-engineering, since changes in the organizational structure can cause changes in the process model. The *LifeEvent Ontology* is specific for the e-Government domain and it is defined to support better searching for e-Government services.

The *Lifecycle Ontology* is defined to help the domain expert introduce the changes in the service description and to document the reasons for these changes [2]. This means that in the OntoGov project we use ontologies not only for describing and composing services provided by public administrations, but also for modelling dependencies between decisions of the different stakeholders (e.g. politicians, public managers and software developers) in order to make services easier to develop and maintain.

5 Illustration of The Use of The Ontology Management System

In this section we illustrate how an e-Government serv-

No	Service Activity
1	Ask the citizen about the address and the kind of the works
2	Decide if they are major or minor works (the service is just offered for the minor works case)
3	In case of being minor works, ask more questions about the works
4	Decide which one of the 3 different licenses includes this kind of minor works
5a	If it is an "Assabentat" (informed regime): - store the data related to the works - grant the license to the citizen.
5b	If it is a "Comunicat" (prior notification regime): - store the data related to the works - store the citizen data - display the list of documents the citizen must provide before receiving the license. - display the payments he must perform before receiving the license.
5c	If it is a "Llicència" (standard license): - store the data related to the works - store the citizen data - display the list of documents the citizen must provide - warn the municipal architects about the procedure so that they can study it in depth.

Table 1: "Minor Building Work License" Service Steps.

ice is modelled using the Ontology Management System as an example. In the example we use the real service "Minor Building Work License" as this is being offered by the municipality of Barcelona. In the past, there were two kind of licenses; the citizen had to bring the documentation to the Citizens Attention Office and the municipal architects had to study it. It could take from 1 to 4 months, due to the large number of licenses requested. Currently, the municipality of Barcelona is involved in an e-Government process re-engineering exercise to simplify the service. In order to achieve this goal, two main steps are followed:

1) Changes in the legal municipal normative structure in order to simplify the procedure. Moreover, a new type of building licence is being introduced.

2) Use of OntoGov platform and other tools so that time and human action in the procedure are reduced as much as possible.

Essentially the new service will be able to detect the kind of building construction the citizen wants to perform and act accordingly. For instance, if a citizen wants to change the structure of a building, s/he will be asked to provide documents related to the security of the works, a project signed by an architect, etc. However, if s/he only wants to change colour of the façade, he may get the license immediately. But what happens if the citizen wants to change the façade colour of the building located at 401 Mallorca Street? The service will be able to notice the difference: at that number there is the Sagrada Família cathedral. Therefore, there are many variables to take into account when a citizen requests a minor building construction. This automation is provided in a number of service steps and these are described in **Table 1**.

The development of this service with ONTOGOV's OMS will be as follows:

The domain expert extends and creates instances of the meta-ontologies for the following ontologies:

1) Domain ontology, comprising concepts like data (e.g. kind of highway, name of the highway, number, boolean answers to questions related to the works, etc.) and documents (e.g. application form, informed regime license, etc.),

2) Legal ontology, comprising instances of process relevant law or regulations, e.g. the basis of this service is the new municipality's ordinance governing minor works (1-1-2005). Then several instances will be initiated in the legal ontology indicating the related law ('Ordenança reguladora d'obres menors'), the title ('Títol 2: Règim d'assabentat') and article ('Article 13: Abast i presentació del règim d'assabentat'),

3) Organisational ontology, comprising instances of process relevant organizational units, e.g. involved in the service are the organizational units 'I.M.I.', 'Municipality of Barcelona,' and 'Town-planning department' with its roles and personnel.

Furthermore, the Domain Expert designs the service using the Service Modeller. First of all s/he creates the service model by naming it and including the ontologies related to it (already modelled with the OI-Modeller from the meta-ontologies). Then s/he must think about the process workflow and perform four main actions during the modelling process:

1) To decide which atomic services he will need and place them into the graph.

2) To establish the relationships between these atomic services by using the different options available in the

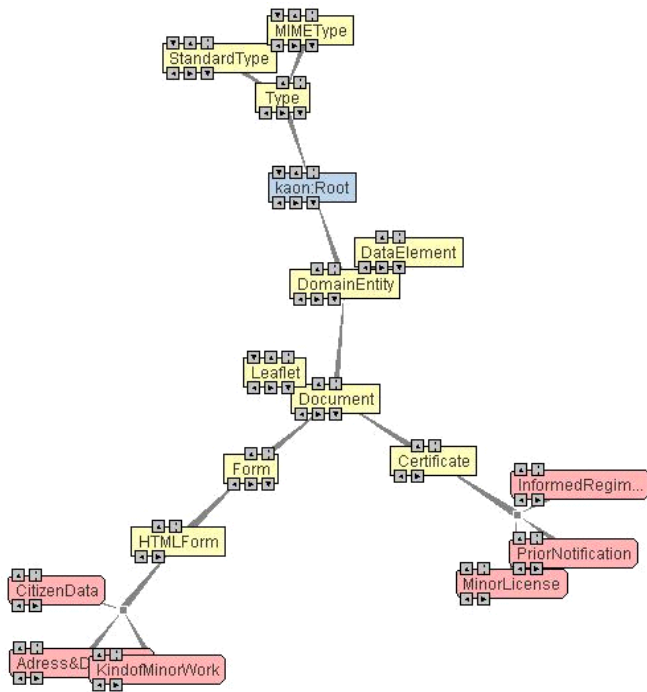


Figure 4: Parts of The Domain Ontology.

OntoGov’s Service Modeller (split, join, switch, etc.).

3) To keep the consistency between the outputs and the inputs of every atomic service and its following ones.

4) To establish at least one first service and one last service so that the workflow may be understood by the Ontogov’s Service Modeller.

After the design process is completed, it is the task of the Service Configuration System to generate the defini-

tion of the new service while the User Management Component will notify the IT consultant that a service model has been created and is ready to be implemented and deployed (not described herein).

6 Conclusions

In this article, we highlighted a novel application of semantic technologies in the e-Government domain: using semantics to support the consistent configuration and change management of e-Government services. The benefits of utilising ontologies in the configuration of e-Government services include the ability to perform consistency checks. The following consistency checks are currently being performed by the Service Modeller:

- (C1) Each service needs to have a reference to at least one business rule (law). For example, the Minor Building Work License service has reference to the municipality’s ordinance governing minor works (1-1-2005). C1 enables to find the corresponding service if a law is changed

- (C2) Each service needs to have at least one resource that controls its execution. For example, the Minor Building Work License service has reference to the ‘Town-planning department’ with its roles and personnel.

- (C3) Each service needs to have at least one software component attached that implements it. For example, the Minor Building Work License service references the ‘Building Database’ (containing information about city buildings as well as the list of the documents the citizen must provide for every kind of construction works) and to the HOST database (containing the current state of the payments).

- (C4) Each service needs to have at least one input. For example, the kind of construction works to be performed.

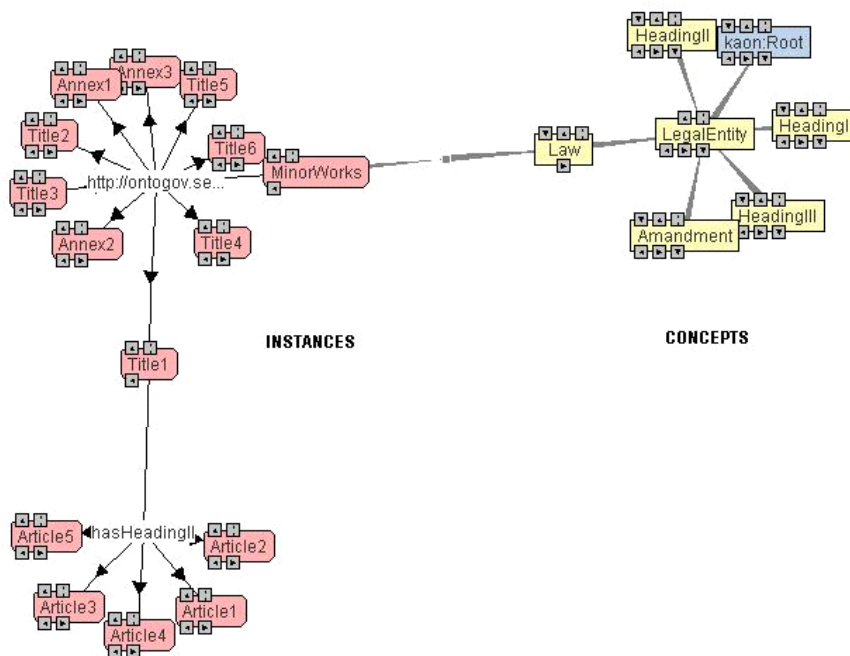


Figure 5: Parts of The Legal Ontology.

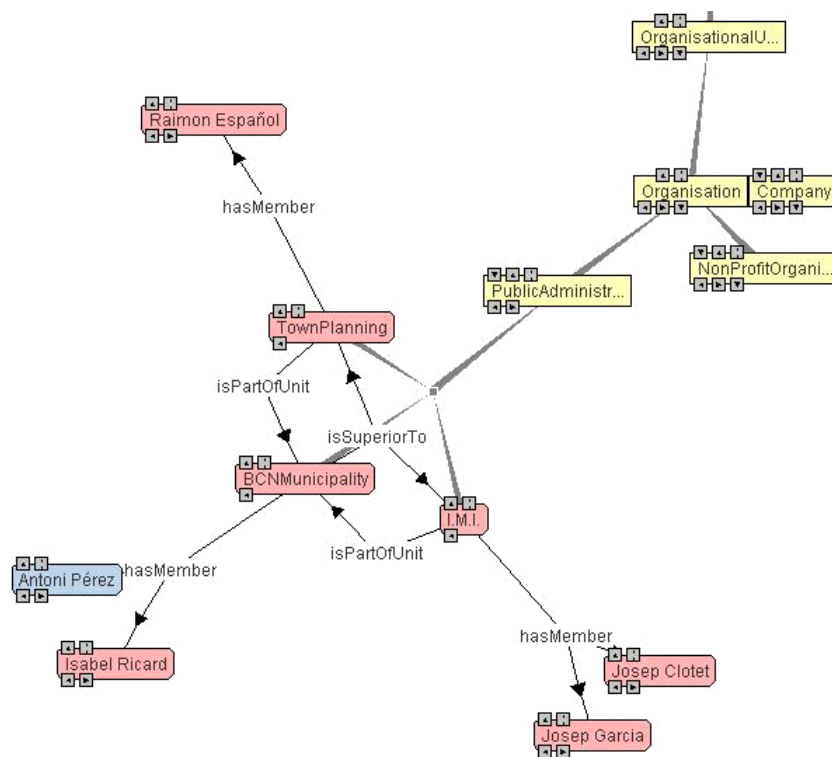


Figure 6: Parts of The Organisational Ontology.

- (C5) Each service needs to have at least one output. For example, which of the 3 different types of licenses apply (if work is classified under ‘minor works’).

- (C6) Each service input has to be either the output of some other service or is specified by the end-user. C6 ensures that a change in an output of an activity is propagated to the inputs of successor activities and vice versa.

- (C7) If the input of a service is the output of another service, then it has to be subsumed by this output.

- (C8) If the input of a service subsumes the input of the next service, then its preconditions have to subsume the preconditions of the next service. C8 prohibits the changes which lead to non-optimal service reconfiguration. For example, if the preconditions for ‘Decide Kind Minor’ include a constraint that the building does not need to be preserved, the preconditions of the next activity cannot be that the building is historical.

- (C9) If two services are subsumed by the same service, then their preconditions have to be disjoint.

- (C10) If a service specialises another service, one of its parameters (i.e. inputs, outputs, pre- or post-conditions) has to be different. The difference can be achieved either by subsuming the relation in its counterpart or by introducing a new one.

- (C11) Inputs, outputs, pre- and post-conditions have to belong to the domain ontology.

- (C12) Any specialization of the activity A1 must always be a predecessor of any specialization of the activity A2, where A1 and A2 are two activities defined in the Meta

Ontology and their order is given in advance (i.e. A1 precedes A2).

Further benefits of our semantics-based approach include support for conflict resolution and change propagation. Based on the consistency checks described above, the system, by providing a mechanism for discovering inconsistencies, will notify the domain experts about logical conflicts. Moreover, it will provide enough information to analyse the sources of conflicts. Its role will be to inform a domain expert about the necessity for updating an e-Government service, and to allow the application of the service changes, enabling the easy spotting of potential problems. Finally, the system will propagate changes from the changes in business rules (e.g. laws) to the changes in the semantic web services and within services. This will guarantee the transfer of all dependent service ontologies into another consistent state.

Finally, if a law changes, the OntoGov system can be queried to retrieve the service activities impacted. In our example, "GenerateListDocs" (which displays the list of documents the citizen should have provided before receiving the license) and "DecideKindMinor" (which decides which kind of license must be granted) are based on various decisions. The different documents to be provided before starting the works are defined by law, depending on each kind of works. The heritage catalogue level of a certain building or the characteristics of the street where this building is located (they are both necessary in order to decide the kind of the license) are located in the town-plan-

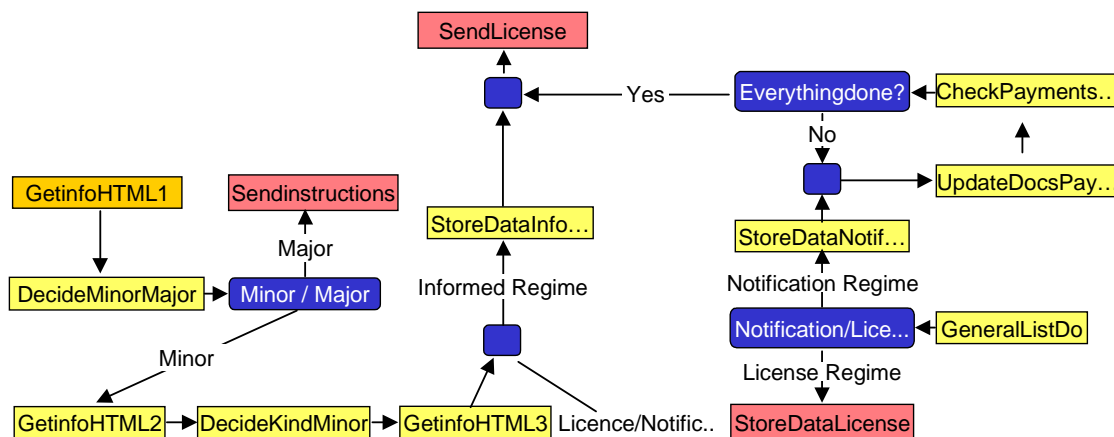


Figure 7: "Minor Building Work License" Service.

ning department databases, whereas the citizen data and the state of payments must be stored in the Municipality's HOST. If a new government is more stringent in applying security for construction works and modifies the existing law on this matter, the list of documents the citizen must provide will change. The OntoGov system will search for all service implementation decisions based on this legal reason and, as a result, all the services and activities impacted will be listed and proposed for modification. In the example, this is the service "Minor Works License" with its activity "GenerateListDocs". Similarly, if some building loses its heritage catalogue level, the activity "DecideKindMinor" will be impacted.

Acknowledgement

The research presented in this paper was financed by the EC as part of the "IST PROJECT 507237 - OntoGov" project (Ontology-enabled e-Gov Service Configuration) within the Information Society Technologies (IST) Programme.

References

[1] N. Adams, S. Haston, A. Macintosh, J. Fraser, A. McKay-Hubbard, and A. Unsworth. SmartGov: A Knowledge-Based Design Approach to Online Social Service Creation, in Bramer, M., Ellis, R., Macintosh, A; (eds.). 'Applications and Innovations in Knowledge-Based Systems and Applied Artificial Intelligence XI'; Proceedings of AI-2003 the 23rd Annual International Conference of the British Computer Society's Specialist Group on Artificial Intelligence; Peterhouse College, Cambridge, UK, 16th-17th December, 2003.

[2] D. Apostolou, L. Stojanovic, T. Pariente Lobo, B. Thoenssen. Towards a Semantically-Driven Software Engineering Environment for eGovernment, TCGOV 2005, pp. 157-168, 2005.

[3] N. Benamou. "Terregov project overview", IANOS Conference, Budapest, 2004.

[4] M. Hagen, H. Kubicek. One-Stop-Government in Europe: Results of 11 national surveys, University of

Bremen, Bremen, 2000. Available at <<http://infosoc2.informatik.uni-bremen.de/egovernment/cost/one-stop-government/home.html>>.

[6] E. Liikanen. "e-Government and the European Union", speech by Mr Erkki Liikanen (Member of the European Commission, responsible for Enterprise and the Information Society) at the Internet and the City Conference "Local eGovernment in the Information Society" Barcelona - 21 March 2003.

[7] E. Loukis, S. Kokolakis. Computer supported collaboration in the Public Sector: the ICTE-PAN Project, in Proceedings of eGOV 2003 / DEXA 2003.

[8] L. Stojanovic et al. D2: E-Gov Service Lifecycle Ontology, 2004, available as Deliverable D2 at <<http://www.ontogov.com>>.

[9] E. Tambouris, M. Wimmer. Online one-stop government: a single point of access to public, in *Digital Government: Strategies and Implementations in Developed and Developing Countries*, Wayne Huang, ed., Idea Publishing Group, 2004.

[10] C. Tatsiopoulos. "QUALEG approach to intra-government interoperability", in Workshop on Technological and architectural challenges, eGOV04 Conference, Zaragoza Spain, 1st September 2004.

[11] T. van Engers, J. M. Patries, J. Kordelaar, J. den Hartog, E. Glassée. POWER: Programme for an Ontology based Working Environment for modelling and use of Regulations and legislation, 2002. Available at <<http://www.lri.jur.uva.nl/~epower/publications/dexa.pdf>> [March 2005].